

# CT Global Focus Fund

## At a glance

A best ideas global equity fund that invests in quality companies with durable competitive advantages and the ability to generate strong and sustainable returns.

## Key reasons to invest

- 1** Focus on quality companies with durable competitive advantages.
- 2** Concentrated 30-50 stock portfolio unconstrained by sector and region.
- 3** Stock selection drives outperformance in both rising and falling markets.

## Key facts

**Fund inception date:**

17 April 2018

**Fund objective:**

Please refer to the Fund KIID for the objective and policy of this fund

**Fund size:**

£261 million (as at 31.12.2024)



**David Dudding**

Co-portfolio Manager  
(since April 2018)



**Alex Lee**

Co-portfolio Manager  
(since July 2023)

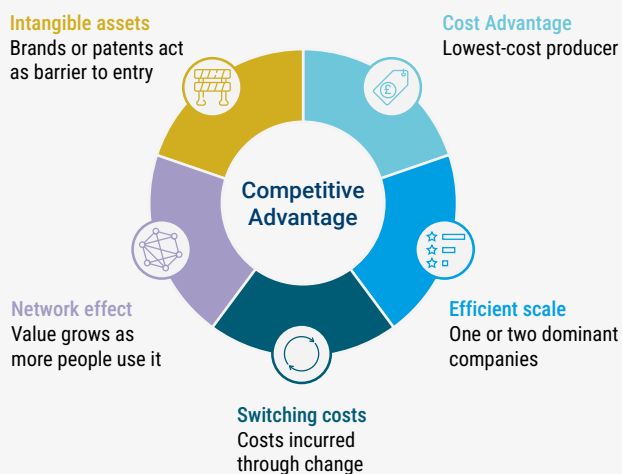
“We seek companies with a competitive advantage, strong cash flow generation and the ability to maintain pricing. By taking a global approach, we are not restricted by increasingly artificial regional boundaries and can invest in truly the best companies across the globe.” – **David Dudding**

# Investment approach

The ability of quality companies to sustain high returns on capital and above-average growth is often underestimated, meaning that potential long-term winners trade at a discount to their intrinsic value. We search for quality stocks which have durable competitive advantages alongside robust business models, and therefore strong and sustainable long-term growth potential. The global equities team thoroughly analyses both company fundamentals and industry prospects. We use a research framework to identify the source and durability of companies' with ESG analysis central to this approach.

We work closely with our regional equity teams, global central research and responsible investment teams across the globe to build a high conviction, best ideas portfolio of some of the world's best quality companies. We are not simply looking for companies with the highest returns, but also ones where they are either stable or improving and are sustainable. As we take a 'go anywhere' approach, stock selection drives sector and regional weightings, and we believe our focus on businesses with strong fundamentals drives outperformance across a range of market conditions.

## How we identify a company's edge



### Industry structure

- Porter's 5 Forces to assess competitive intensity
- Prefer consolidated / consolidating industries
- Impact of regulation and secular themes

### Competitive advantage

- Focus on understanding source and sustainability
- Established and / or improving
- All holdings will display one or more

### ESG

- Integrated into research process
- Determinant of company quality
- Measure of risk / Informs opportunity
- Active engagement

## Key risks

Past performance is not a guide to future returns and the fund may not achieve its investment objective.

Your capital is at risk.

The value of investments can fall as well as rise and investors might not get back the sum originally invested.

Where investments are in assets that are denominated in multiple currencies, or currencies other than your own, changes in exchange rates may affect the value of the investments.

The investment policy of the fund allows it to invest in derivatives for the purposes of reducing risk or minimising the cost of transactions.

The fund may exhibit significant price volatility.

The fund has a concentrated portfolio (holds a limited number of investments and/or has a restricted investment universe) and if one or more of these investments declines or is otherwise affected, it may have a pronounced effect on the fund's value.

All the risks currently identified as being applicable to the Fund are set out in the "Risk Factors" section of the Prospectus.

Please read the Key Investor Information Document and the Fund Prospectus if considering investing.

To find out more visit [columbiathreadneedle.com](https://columbiathreadneedle.com)



© 2025 Columbia Threadneedle Investments. Columbia Threadneedle Investments is the global brand name of the Columbia and Threadneedle group of companies. This financial promotion is issued for marketing and information purposes only by Columbia Threadneedle Investments in Middle East, Switzerland and the UK. The Fund is a sub-fund of Columbia Threadneedle Specialist Funds (UK) ICVC ("CTSF"), an open-ended investment company structured as an umbrella company, incorporated in England and Wales, authorised and regulated in the UK by the Financial Conduct Authority (FCA) as a UK UCITS scheme. The CTSF's current Prospectus, the Key Investor Information Document (KIID)/Key Information Document (KID), latest annual or interim reports and the applicable terms & conditions are available from Columbia Threadneedle Investments at PO Box 10033, Chelmsford, Essex CM99 2AL, your financial advisor and/or on our website [www.columbiathreadneedle.com](https://www.columbiathreadneedle.com). For Switzerland documents are available from our Paying Agent in Switzerland, BNP Paribas, Paris, Zurich Branch Selnaustrasse 16, 8002 Zurich, Switzerland. This material should not be considered as an offer, solicitation, advice or an investment recommendation. An investment may not be suitable for all investors and independent professional advice, including tax advice, should be sought where appropriate. This communication is valid at the date of publication and may be subject to change without notice. Information from external sources is considered reliable but there is no guarantee as to its accuracy or completeness. In Switzerland and the UK: Issued by Threadneedle Investment Services Limited. Registered in England and Wales, Registered No. 3701768, Cannon Place, 78 Cannon Street, London EC4N 6AG, United Kingdom. Authorised and regulated in the UK by the Financial Conduct Authority. This document may be made available to you by an affiliated company which is part of the Columbia Threadneedle Investments group of companies: Columbia Threadneedle Management Limited in the UK; Columbia Threadneedle Netherlands B.V. in the EEA. [columbiathreadneedle.com](https://columbiathreadneedle.com) CTEA7554412.1 | WF2660425 (valid from 01.25 to 12.25)