

Responsible Investing

Columbia Threadneedle (Lux) Global Focus

At a glance

A best ideas global equity fund that invests in quality growth companies with durable competitive advantages and the ability to generate strong and sustainable returns.

Investment objective and policy

To provide long-term capital growth and outperform the MSCI AC World Index by investing in a concentrated and actively managed portfolio of global equities.

In line with its active management strategy of holding a small number of investments, portfolio holdings may deviate significantly from those of the index while there is also the flexibility to invest in off-benchmark companies.

The fund promotes environmental and social characteristics by integrating a range of responsible investment measures into the investment decision-making process, as well as ensuring that the companies in which the Portfolio invests follow good governance practices.

Key reasons to invest

- 1. Differentiated investment approach:** A clear and consistent quality approach focusing on competitive advantage to deliver strong, sustainable returns.
- 2. Accesses the best global ideas:** Freedom to invest without constraints across regions, sectors and market capitalisation, accessing both developed and emerging markets.
- 3. Strength in research:** Global research capabilities and bottom-up stock picking drive high-conviction portfolio holdings.

Key risks

Investment risks: Investment in equities, portfolio concentration and currencies.

ESG risks: The Fund applies a range of measures as part of its consideration of ESG factors, including the exclusion of investments involved in certain industries and/or activities. This reduces the investable universe, and may impact the performance of the Fund positively or negatively relative to a benchmark or other funds without such restrictions.

Investors could lose some or all their capital and should read the Prospectus for a full description of all risks.

Investment approach

The ability of quality companies to sustain high returns on capital and above-average growth is often underestimated, meaning that potential long-term winners trade at a discount to their intrinsic value.

We search for quality stocks which have durable competitive advantages alongside robust business models, and therefore strong and sustainable long-term growth potential. The global equities team thoroughly analyses both company fundamentals and industry prospects. We use a research framework to identify the source and durability of companies' with ESG analysis central to this approach.

We work closely with our regional equity teams, global central research and responsible investment teams across the globe to build a high conviction, best ideas portfolio of some of the world's best quality companies. We are not simply looking for companies with the highest returns, but also ones where they are either stable or improving and are sustainable. As we take a 'go anywhere' approach, stock selection drives sector and regional weightings, and we believe our focus on businesses with strong fundamentals drives outperformance across a range of market conditions.

The Fund promotes environmental and social characteristics through:



Delivering a positive ESG 'tilt'



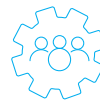
Investing in 'sustainable investments'



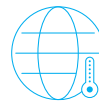
Applying exclusions



Considering Principle Adverse Impacts



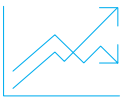
Investing in companies with good governance



Targeting net zero by 2050



Active engagement



A positive Environmental, Social and Governance (ESG) tilt

The fund delivers a positive ESG tilt compared to its MSCI AC World Index, measured by our ESG Materiality Rating, on a rolling 12-month basis.

The ESG Materiality Ratings give us an initial view of how a company is managing the ESG risks that are material to its industry.

Delivering a positive tilt enables us to focus the portfolio in companies with strong ESG risk management. We can also invest in companies with scope to improve, and actively engage with them to encourage change.



Sustainable investments

The fund has committed to hold a minimum of **20%** of the portfolio in "sustainable investments".

- > We assess the proportion of each company's revenue that is aligned with the **Sustainable Development Goals** (SDGs), using a tool designed by the Responsible Investment team. The majority of the company's revenues must be positively aligned with one or more of the SDGs to be considered sustainable.
- > We analyse companies to ensure they are not doing "significant harm" to any other sustainable objective.



Exclusions

The fund excludes:

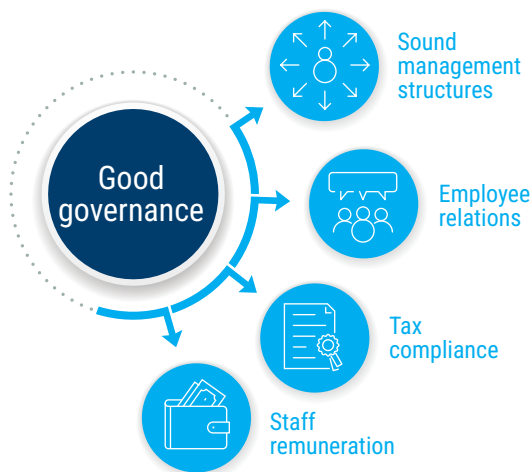
- > Companies we deem are in breach of international standards of practice including:
 - the United Nations Global Compact
 - the International Labour Organisation Labour Standards
 - United Nations Guiding Principles on Business and Human Rights.
- > Companies earning a certain proportion of revenue from these industries or activities:
 - Controversial weapons (complete ban), Nuclear weapons, Conventional weapons, Thermal coal and Tobacco production.

Good governance

We assess companies' governance before investing and review governance continually for all companies held. We use data from MSCI and ISS to complement our own research, covering four areas:

The Fund is categorised an Article 8 under the EU Regulation 2019/2088 on sustainability related disclosures in the financial services sector (SFDR) and promote environmental or social characteristics as an objective.

The decision to invest should also take into account all the characteristics or objectives described in its prospectus. The fund's sustainability related disclosures can be found on our website columbiathreadneedle.com



Principal adverse impacts (PAIs)

All companies have an impact on the environment and/or society, both good and bad. We consider the "principal adverse impacts" of our investments. We do this through exclusions, investment research and engagement with companies.



Environmental indicators

- 1.1 Greenhouse gas emissions
- 1.2 Carbon footprint
- 1.3 Greenhouse gas intensity
- 1.4 Exposure to fossil fuels
- 1.5 Non-renewable energy consumption and production
- 1.6 Energy consumption intensity per high impact climate sector
- 1.7 Activities negatively affecting biodiversity sensitive areas



Social & Governance indicators

- 1.10 Violations of international standards and principles
- 1.14 Exposure to controversial weapons
- 3.7 Incidents of discrimination

Net zero emissions

As a member of the Net Zero Asset Managers Initiative, the Fund has committed to an ambition to reach net zero emissions by 2050 or sooner. Our focus is on real-world change, using stewardship to encourage companies to align to a net zero future.



Company assessment

- > We rate companies on their alignment to a net zero pathway
- > We aim for companies representing >70% of portfolio emissions either aligned to net zero, or under engagement



Net zero stewardship

- > We engage with laggard or high-impact companies on climate objectives
- > We sell when minimum expectations are not met



Portfolio assessment

- > We compare a fund's carbon emissions with net zero-aligned trajectory
- > Use the benchmark's 2019 emissions and apply a 50% reduction by 2030
- > Reference the pathway to track progress, not a binding target



Coal exclusion

- > Companies with >30% revenues from coal or investing in new coal infrastructure

More information on our net zero methodology can be found [here](#).

Engagement

We believe in the power of active ownership. Our aim is to reduce risk, enhance long-term performance and encourage a positive contribution to environmental, social and governance issues



We use constructive, confidential dialogue, typically working one-to-one with companies, but taking a collaborative approach where this has more impact



A deep understanding of how ESG issues impact mainstream business strategy



The building of long-term relationships with companies



Local knowledge and context



Access to senior management and board

To find out more, visit columbiathreadneedle.com



Important information: Your capital is at risk. Columbia Threadneedle (Lux) is a Luxembourg domiciled investment company with variable capital ("SICAV"), managed by Threadneedle Management Luxembourg S.A.. This material should not be considered as an offer, solicitation, advice or an investment recommendation. This communication is valid at the date of publication and may be subject to change without notice. Information from external sources is considered reliable but there is no guarantee as to its accuracy or completeness. The SICAV's current Prospectus, the Key Investor Information Document (KIID)/ Key Information Document (KID) and the summary of investor rights are available in English and/ or in local languages (where applicable) from the Management Company Threadneedle Management Luxembourg S.A., International Financial Data Services (Luxembourg) S.A., your financial advisor and/or on our website www.columbiathreadneedle.com. In Switzerland, the Prospectus, PRIIPs KIDs, Articles, Annual and Semi-Annual Reports and/or any such documents, which are required for the approval in compliance with the applicable foreign law, may be obtained free of charge from the Swiss Representative and Paying Agent CACEIS Bank, Montrouge, Zurich Branch / Switzerland, Bleicherweg 7, CH 8027 Zurich, Suisse. Threadneedle Management Luxembourg S.A. may decide to terminate the arrangements made for the marketing of the SICAV. Pursuant to article 1:107 of the Act of Financial Supervision, the sub-fund is included in the register that is kept by the AFM. Threadneedle (Lux) is authorised in Spain by the Comisión Nacional del Mercado de Valores (CNMV) and registered with the relevant CNMV's Register with number 177. Past performance is calculated according to the BVI method in Germany.

In the EEA and Switzerland: Issued by Threadneedle Management Luxembourg S.A. registered with the Registre de Commerce et des Sociétés (Luxembourg), Registered No. B 110242, 44 rue de la Vallée, L-2661 Luxembourg, Grand Duchy of Luxembourg.

In the UK: Issued by Threadneedle Asset Management Limited. Registered in England and Wales, No. 573204. Registered Office: 78 Cannon Street, London EC4N 6AG, United Kingdom. Authorised and regulated in the UK by the Financial Conduct Authority.

In the Middle East: This document is distributed by Columbia Threadneedle Investments (ME) Limited, which is regulated by the Dubai Financial Services Authority (DFSA).

For Institutional Clients: The information in this document is not intended as financial advice and is only intended for persons with appropriate investment knowledge and who meet the regulatory criteria to be classified as a Professional Client or Market Counterparties and no other Person should act upon it. This document and its contents and any other information or opinions subsequently supplied or given to you are strictly confidential and for your sole use only and not for further distribution. By accepting delivery of this presentation, you agree that it is not to be copied or reproduced in whole or in part and that you will not disclose its contents to any other person. For Distributors: This document is intended to provide distributors' with information about Group products and services and is not for further distribution.

This document may be made available to you by an affiliated company which is part of the Columbia Threadneedle Investments group of companies: Columbia Threadneedle Management Limited in the UK.

Certain Funds and/or share classes may not be available in all jurisdictions. This document must not be issued, circulated or distributed other than in circumstances which are in accordance with applicable local legislation. Columbia Threadneedle Investments is the global brand name of the Columbia and Threadneedle group of companies. CTEA6737341.1- | WF2438700 (08/24)